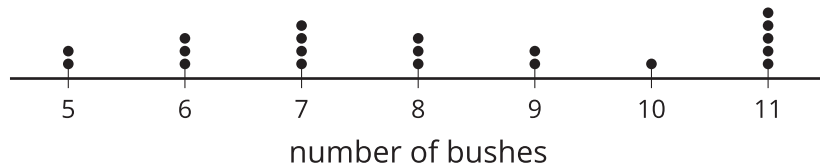


Lesson 2 Practice Problems

Problem 1

Statement

The dot plot displays the number of bushes in the yards for houses in a neighborhood. What is the median?



Solution

8 bushes

Problem 2

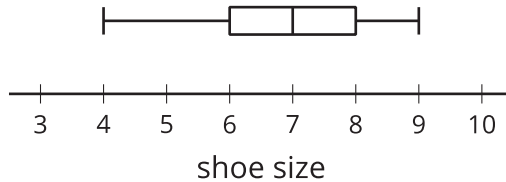
Statement

The data set represents the shoe sizes of 19 students in a fifth grade physical education class.

4, 5, 5, 5, 6, 6, 6, 6, 7, 7, 7, 7, 7.5, 7.5, 8, 8, 8.5, 8.5, 9

Create a box plot to represent the distribution of the data.

Solution



Problem 3

Statement

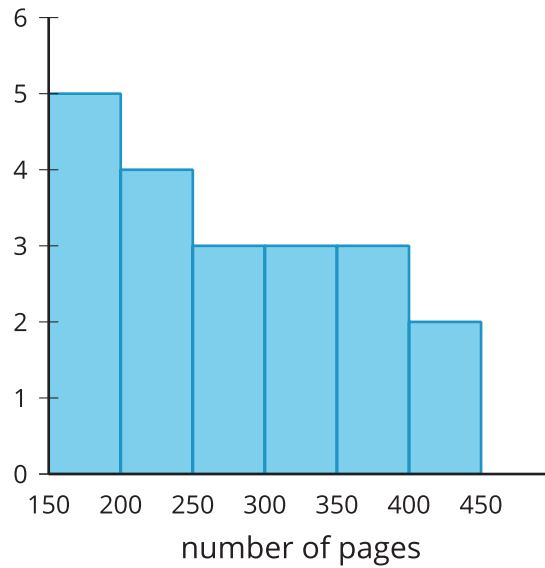
The data set represents the number of pages in the last book read by each of 20 students over the summer.

163, 170, 171, 173, 175, 205, 220, 220, 220, 253, 267, 281, 305, 305, 305, 355, 371, 388, 402, 431

Create a histogram to represent the distribution of the data.

Solution

Sample response:



Problem 4

Statement

Each set of data was collected from surveys to answer statistical questions. Select **all** of the data sets that represent numerical data.

- A. {1, 1.2, 1.4, 1.4, 1.5, 1.6, 1.8, 1.9, 2, 2, 2.1, 2.5}
- B. {Red, Red, Yellow, Yellow, Blue, Blue, Blue}
- C. {45, 60, 60, 70, 75, 80, 85, 90, 90, 100, 100, 100}
- D. {-7, -5, -3, -1, -1, -1, 0}
- E. {98.2, 98.4, 98.4, 98.6, 98.6, 98.6, 98.6, 98.7, 98.8, 98.8}
- F. {Yes, Yes, Yes, Yes, Maybe, Maybe, No, No, No}
- G. {A, A, A, B, B, B, C, C, C}

Solution

["A", "C", "D", "E"]

(From Unit 1, Lesson 1.)

Problem 5

Statement

Is "What is the typical distance a moped can be driven on a single tank of gas?" a statistical question? Explain your reasoning.

Solution

Sample response: Yes, it is a statistical question, because the data required to answer it would vary. The distance the moped traveled would likely depend on speed or the number of hills.

(From Unit 1, Lesson 1.)